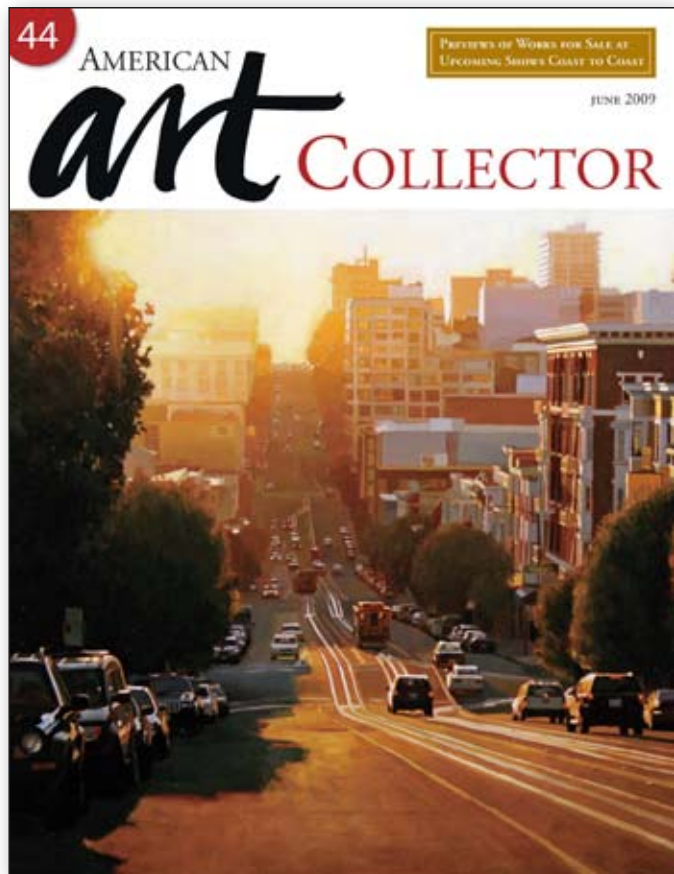


As seen in the
June 2009 issue of

 AMERICAN
art COLLECTOR



UPCOMING SHOW

Up to 20 works on show
June 19-July 2, 2009
Addison Art Gallery
43 Route 28
Orleans, MA 02653
(508) 255-6200

• SHOW LOCATION ORLEANS, MA

PAUL SCHULENBURG

Light and figure

Paul Schulenburg uses his interior scenes to provide a break from painting his more common exteriors, but the former is starting to take up more and more of his painting time these days. While Schulenburg is more well-known for his paintings of fishermen, dock workers and others employed in various capacities around Cape Cod, some of his newest pieces are interiors, which provide a new subject for Schulenburg to explore.

“I do like to mix it up,” says Schulenburg. “One day, I’ll do the exterior ones, which

seem to be more bright and contrasted, and then I’ll do the more muted and subtle ones inside. I like the interior pieces because they allow me to play with light and shadow and shapes.”

Schulenburg is changing his approach even more by painting interior scenes without figures, something he rarely does. An example of this in the current exhibition is titled *White on White*, which shows two towels hanging next to each other on the back of a bathroom door.

“My wife and I were staying in

Provincetown on an art trip and were about to go out looking for inspiration and I just happened to notice the towels hanging there on the door,” says Schulenburg. “I thought they depicted our personality as one was hers, one was mine, and like us, they were so much different but so much the same. So, even though there aren’t figures in the painting, these towels were symbols of persons and personalities.”

This manner of catching notice of something and feeling compelled to paint it is what marks much of Schulenburg’s work.



WHITE ON WHITE, OIL ON CANVAS, 24 X 18"

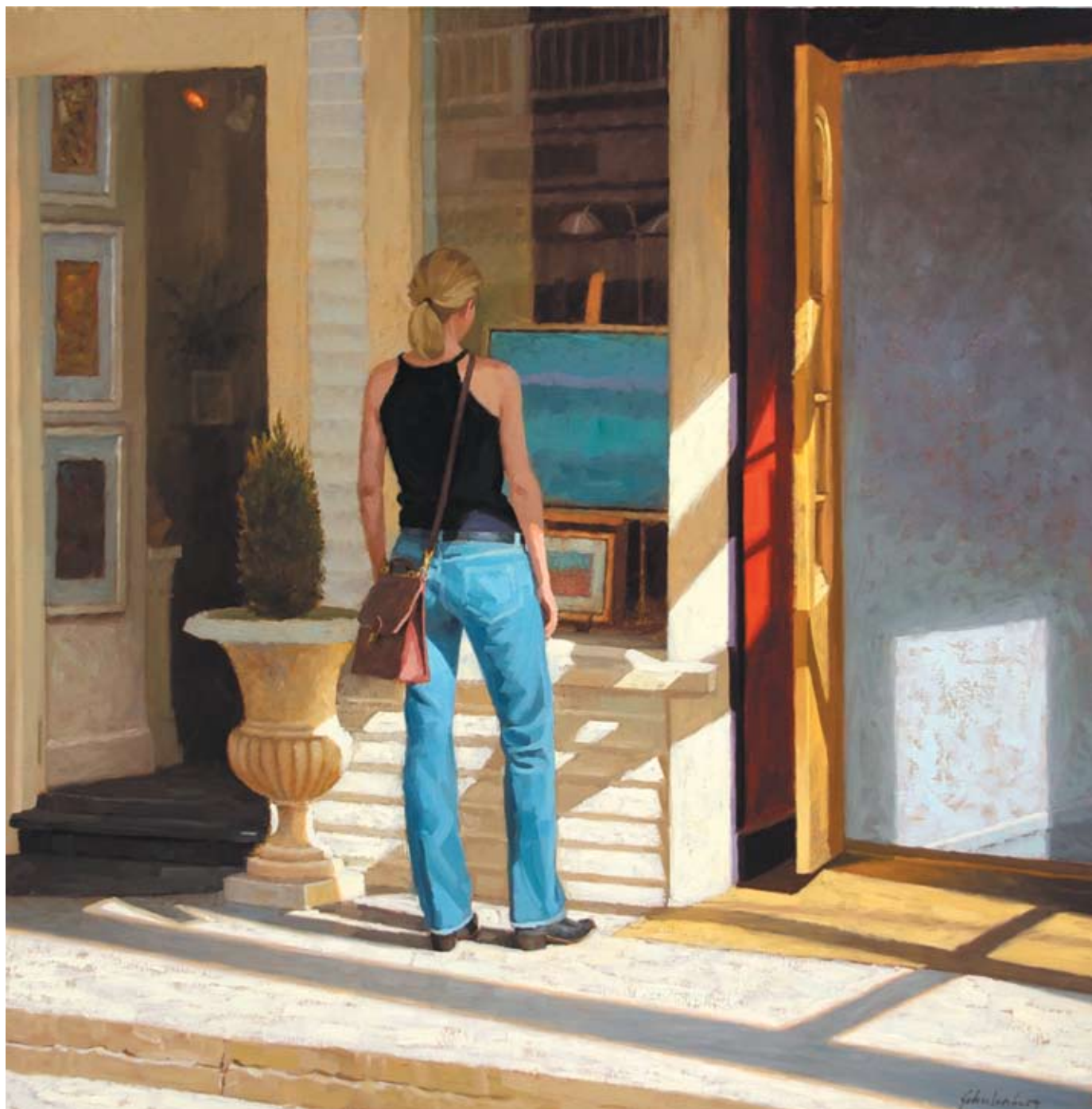


PROTECTING THE LINES, OIL ON CANVAS, 40 X 30"

The Gallery Says . . .

“Collectors of Paul Schulenburg’s works are intrigued by his range of subject matter. His graphic depictions of fishermen are instantly recognized as Schulenburg’s and his interiors and landscapes resonate with new and well-experienced collectors.”

— Domonic Boreffi, Gallery Director, Addison Art Gallery



WINDOW SHOPPER, OIL ON CANVAS, 36 X 36"

The Collector Says . . .

"I consider Paul Schulenburg a master at painting light. He makes use of light and shaded areas to create dynamic compositions that have genuine and lasting impact."

— Elizabeth Pratt, Copley Master and Collector



SWEET DECISION, OIL ON CANVAS, 30 X 24"



FINAL APPROACH, OIL ON CANVAS, 28 X 22"



PAUL SCHULENBURG AT WORK IN HIS CAPE COD STUDIO.

“That’s how I approach the work,” says Schulenburg. “It’s not deliberate at all, but I just observe and if something catches my attention, I’ll paint it. I want it to look natural, like I’m just walking around and happen to see something that I might just come back and paint later.”

Schulenburg also favors painting from life over anything staged because he believes it’s easier to paint what crosses his path rather than pay a model and end up with a painting that may look staged.

“It’s hard to pose someone,” says Schulenburg. “I want to be able to watch and observe them, so it looks more natural and you get them acting like themselves. When you direct a model, it seems forced and unnatural, so I usually try and find a situation that is real and then work from that. I’ll wait for someone to get in a position that looks good and then ask them to hold that.”

Schulenburg uses a similar approach to his paintings of fishermen and boat crew that come from his careful observation around Cape Cod coastal areas.

“When I am working on the fishermen, I’ll watch them work, see them do what they do and then try to come up with something based on all this observation,” says Schulenburg. “In the painting *Protecting the Lines*, this tall ship came into Provincetown and the crew was full of these young women who were just crawling up and down the ropes and working so hard. It was just amazing watching them all work. So, for this one, I just liked the way she was sitting, working on the lines, and I like the way light falls across the figure.” ●

For a direct link to the exhibiting gallery go to



www.americanartcollector.com



Price Range Indicator

Our at-a-glance Price Range Indicator shows what you can expect to pay for this artist’s work.

	Small	Medium	Large
2001	\$500	\$1,800	\$4,000
2007	\$1,000	\$3,600	\$10,000
2009	\$1,200	\$4,400	\$12,000